

The Scottish Borders Campus guest network is designed to allow students, staff and visitors to connect their own wifi enabled devices to the internet while on campus.

Access to this network is subject to Borders College acceptable use policy, Heriot-Watt University's regulation 29 and Ja.net acceptable use policy. (See notes for availability of these policies). Any user logging into the network is deemed to have accepted these policies.

To access the network user must have a valid user name and password. These are available to staff and students from the campus library and are for use by the specified individual only.

## Connecting to the guest network

- 1) Obtain a valid user name and password from the Campus library
- 2) Enable the Wifi on your laptop etc and it should automatically detect the network, see figure 1.

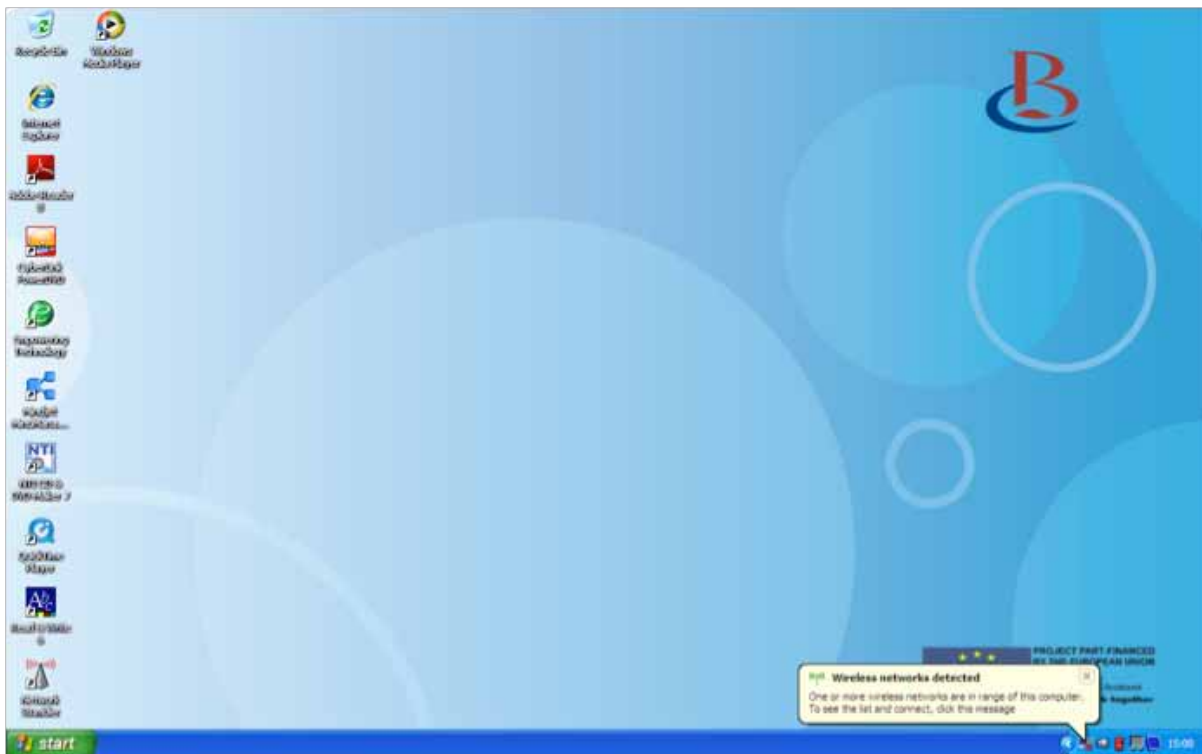


Figure 1: Detecting WiFi networks

- 3) Click on the balloon and the screen should display an option similar to figure 2.

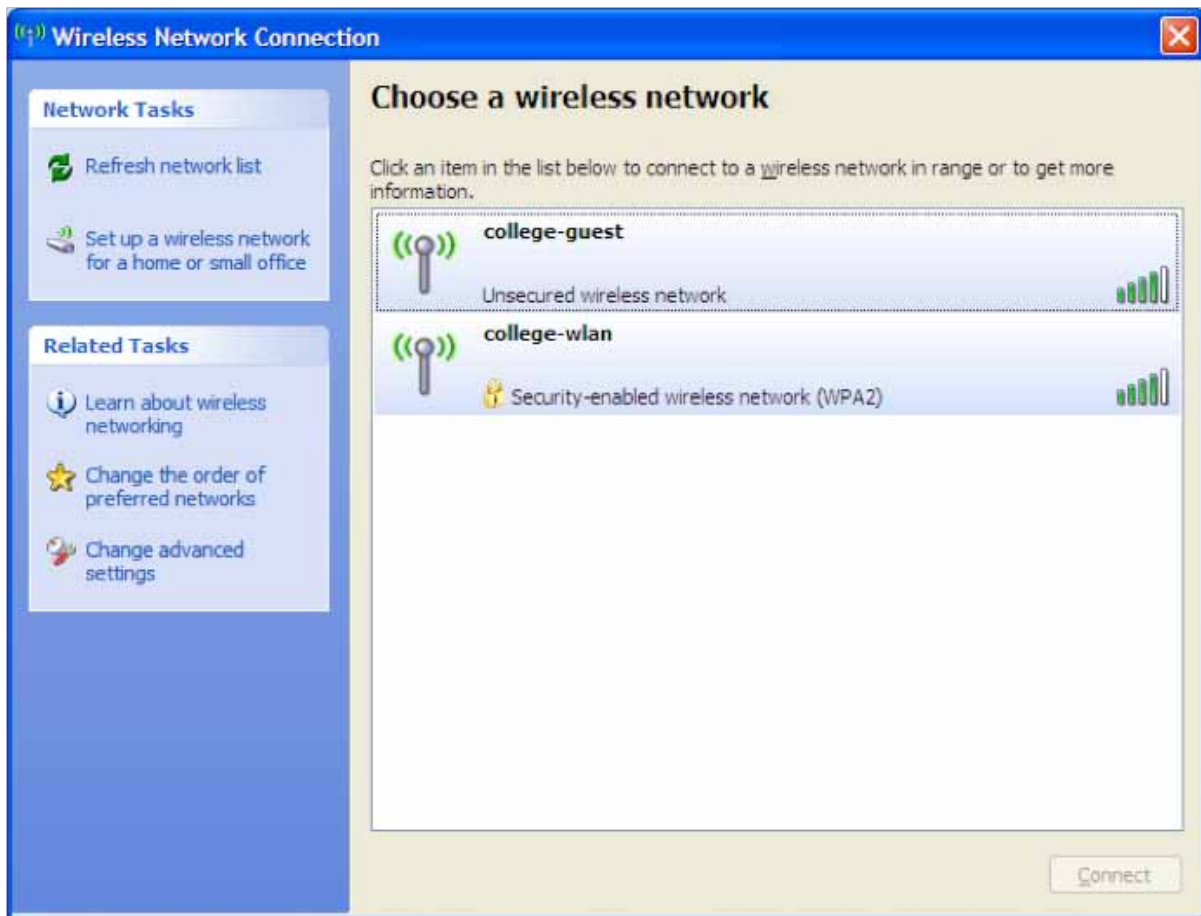


Figure 2: Detected networks

- 4) Select the college-guest network and click “Connect Anyway” at the warning box.



- 5) Open your web browser and your homepage should be re-directed to the WiFi login screen shown in Figure 3.
- 6) Configure your browser to automatically detect settings. For Internet Explorer, select Tools -> Internet Options, select the Connections tab then click the LAN settings button. In the Local Area Network (LAN) settings dialogue ensure automatically detect settings is ticked, and the two other tick boxes are clear. Select Ok then Okay again. See figure 4. Details on how to set up some other browsers are at the end of this note.

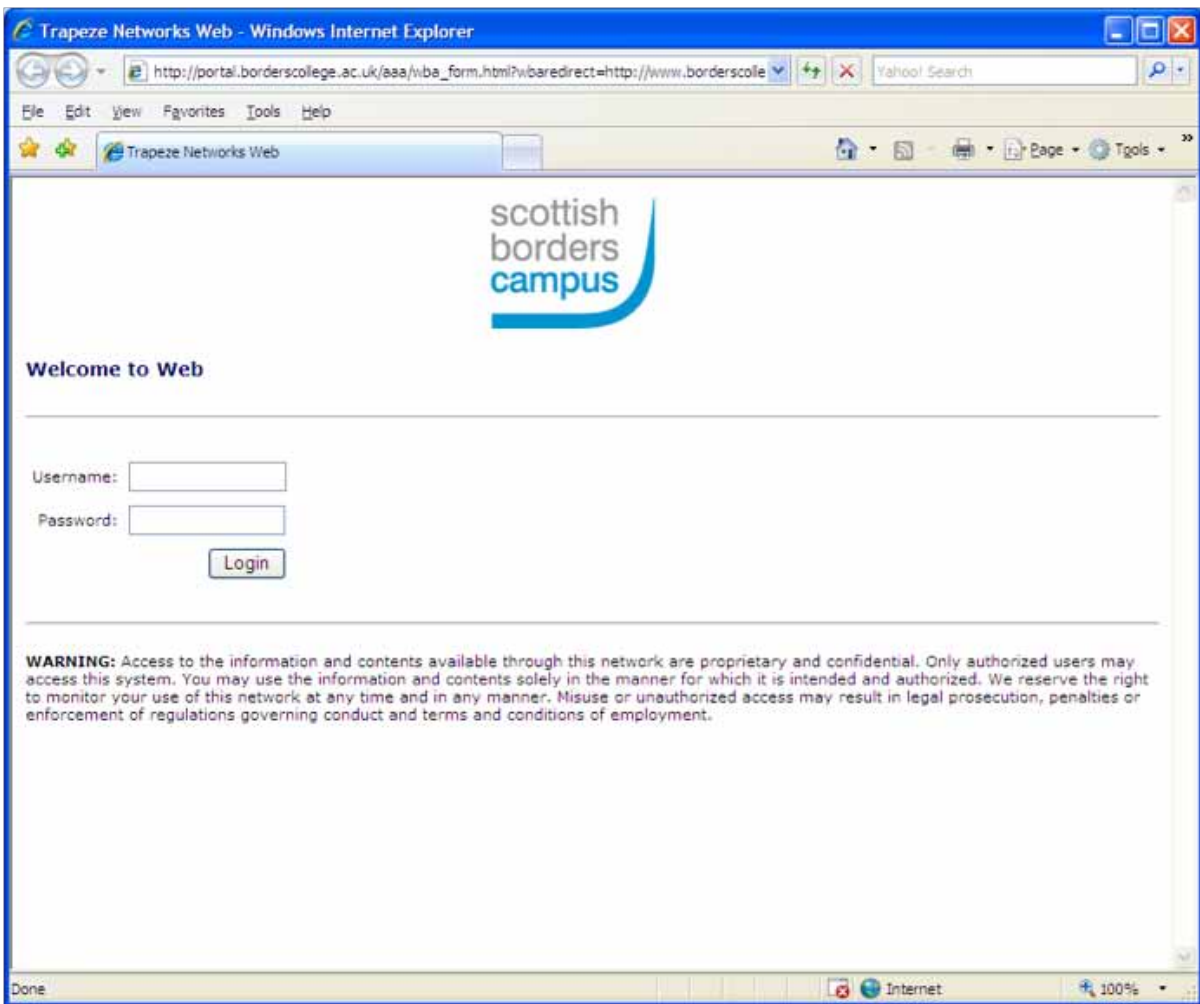


Figure 3: Guest login screen

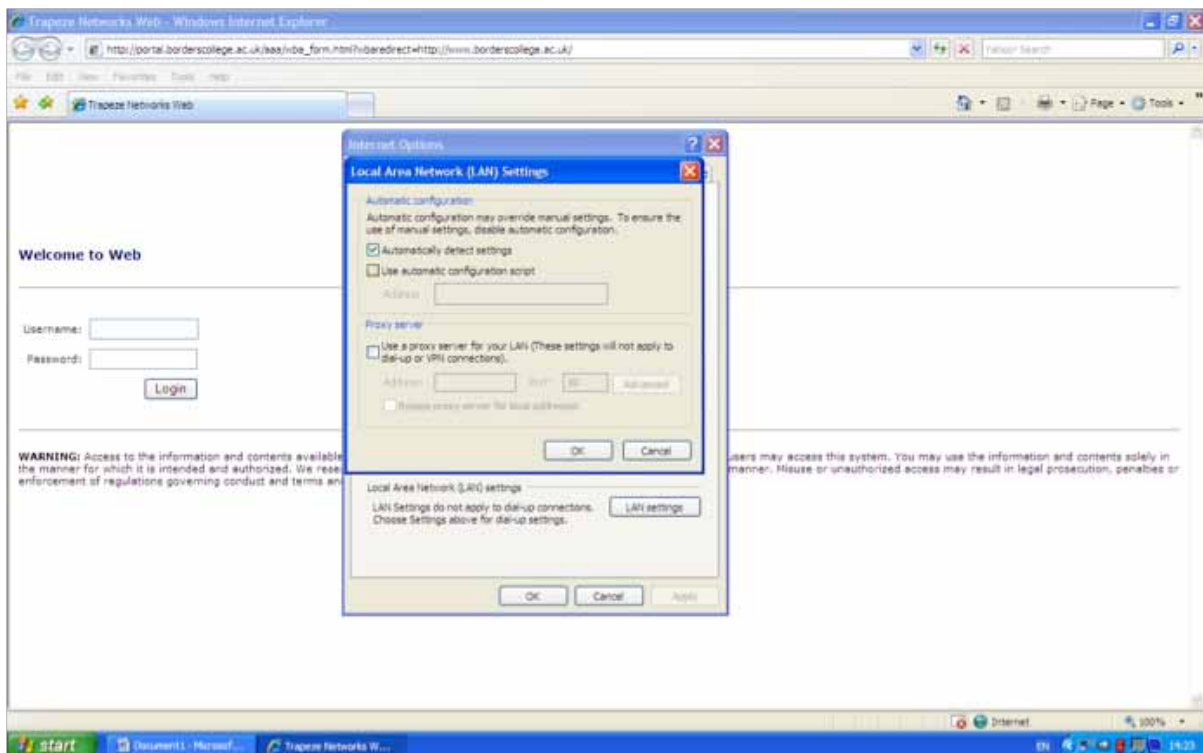


Figure 4: Setting Internet Explorer for auto-configure.

- 7) Refreshing your browser should display the screen shown in figure 3. Enter the username and password you received for the guest network. If your login is valid you will see the screen shown in figure 5 and after a few seconds be redirected to your home page. If your homepage is not displayed you may need to restart your browser.

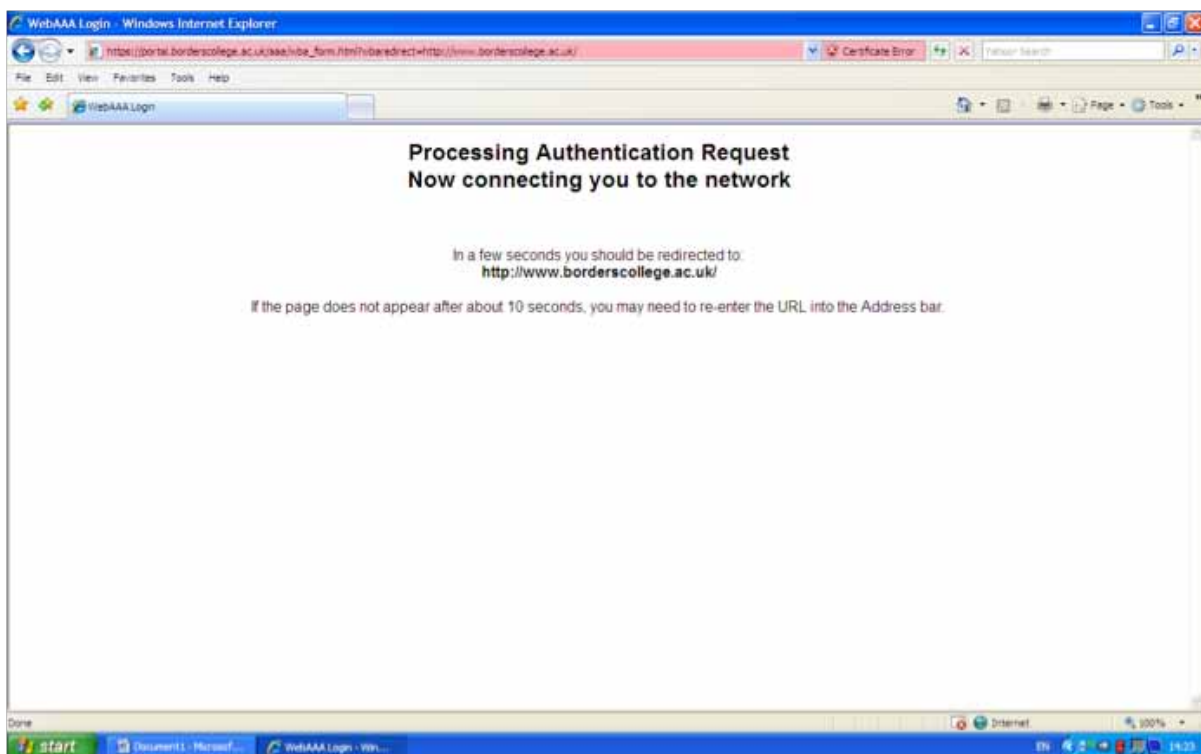


Figure 5: Successful login

## Note:

### Ja.net acceptable use policy

<http://www.ja.net/company/policies/janet-aup.html>

### Borders College staff and student acceptable use policies

[http://www.borderscollege.ac.uk/downloads/sudent\\_internet\\_access.pdf](http://www.borderscollege.ac.uk/downloads/sudent_internet_access.pdf)

[http://www.borderscollege.ac.uk/downloads/information\\_security\\_policy.pdf](http://www.borderscollege.ac.uk/downloads/information_security_policy.pdf)

### Heriot-Watt University

[http://www.hw.ac.uk/uics/Help\\_FAQs/Regulation\\_29.html](http://www.hw.ac.uk/uics/Help_FAQs/Regulation_29.html)

## Setting web proxy on other browsers

To connect to the internet your browser must be set to use an internet proxy, most browsers will automatically pickup these settings from the network. See below for how to manually set up some popular browsers.

### Firefox

Goto Tools -> Options -> Advanced and select the Network tab. Click the Settings button and ensure "Auto-detect proxy settings for network is ticked", click okay twice.

### Safari

Click on Preferences. In the menu bar at the top of the window, Click on Advanced. Click on the Change Settings button next to the Proxies label. Click on the check box button next to Web Proxy (HTTP). Enter proxy.webfiltering.ja.net into the field next to that check box button. Enter 8080 into the field labelled Port next to that.

### Manually

proxy.webfiltering.ja.net uses port 8080. This is usually entered into a browser proxy as [http:// proxy.webfiltering.ja.net:8080](http://proxy.webfiltering.ja.net:8080)